


LOTUS





LOTUS & LOTUS STYLE

WATCHES . JEWELRY

Is always seeking new advances, based on better materials to offer a product that responds to the needs of a demanding, dynamic and modern customer who values above all quality. Lotus is synonymous with innovation, pushing the market forward and always offering the most up-to-date materials, designs and technology. Exclusive, cutting edge design for a contemporary “urban” and trendy style.

Lotus est toujours à la recherche de nouvelles avancées, basées sur de meilleurs matériaux pour offrir un produit qui répond aux besoins d'un client exigeant, dynamique et moderne qui apprécie avant tout la qualité. Lotus est synonyme d'innovation, poussant le marché vers l'avant et offrant toujours les matériaux, les designs et les technologies les plus modernes. Un design exclusif et avant-gardiste pour un style contemporain “urbain” et branché.

CONTENT



DIVER

CHRONO

COLOR

FREEDOM

EXCELLENT

SMARTWATCH

BLISS



MEN IN BLACK

URBAN MAN

MAN BASIC

MEN'S EARRINGS

BLISS

URBAN WOMAN

TREE OF LIFE

WOMAN'S HEART

MILLENNIAL

TROPICAL VIBES



DIVER COLLECTION

The new Diver collection offers you timepieces with a modern and sporty design, vibrant colored dials, and most importantly, water resistant to 20 ATM.

La nouvelle collection Diver vous propose des montres au design moderne et sportif, des cadrans aux couleurs éclatantes et, surtout, une étanchéité à 20 ATM.



18926/1



18926/2



18926/3



18926/4



18926/5



18926/6



18926

MAN

Quartz Movement

Case diameter Ø 44.5 mm

20ATM

\$ 299



DIVER COLLECTION



18927/2



18927/3



18928/1



18928/2

18927 - 18928

MAN

20ATM

Case diameter Ø 45.0 mm

Quartz Movement

\$ 279



CHRONO COLLECTION

Exclusive, cutting edge design for a contemporary “urban” and trendy style.

Design exclusif, avant-gardiste pour un style contemporain urbain et branché.





18152/4



18152/E



18152/G

18152

MAN

CHRONO

Quartz Movement

Case diameter Ø 43.0 mm

5 ATM

\$ 229



18153/1



18153/2



18153/B

18153

MAN

CHRONO

Quartz Movement

Case diameter Ø 43.0 mm

5 ATM

\$ 249



18637/2



18637/3

18637

MAN

CHRONO

Quartz Movement

Case diameter Ø 43.0 mm

5 ATM

\$ 229



18638/1



18639/1



18639/E

18638-18639

MAN

CHRONO

Quartz Movement

Case diameter Ø 43.0 mm

5 ATM

\$ 249



18668

MAN

CHRONO

Quartz Movement

Case diameter Ø 41.5 mm

5 ATM

\$ 229

18668/2



18680/1



18680/2

18680

MAN

CHRONO

Quartz Movement

Case diameter Ø 43.0 mm

10 ATM

\$ 249



18850/4

18850

MAN

CHRONO

Quartz Movement

Case diameter Ø 38.0 mm

5 ATM

\$ 239



CHRONO COLLECTION



18682/2



18682/4



18682/5



18682/6

18682

MAN

CHRONO

Quartz Movement

Case diameter Ø 42.0 mm

10 ATM

\$ 229



18686/2



18686/3



18686/4



18686/5

18686

MAN

CHRONO

Quartz Movement

Case diameter Ø 43.0 mm

10 ATM

\$ 249



18683/2

18683

MAN

CHRONO

Quartz Movement

Case diameter Ø 42.0 mm

10 ATM

\$ 199



18687/2

18687

MAN

CHRONO

Quartz Movement

Case diameter Ø 43.0 mm

10 ATM

\$ 219





18689/1



18689/2

18689

MAN

CHRONO

Quartz Movement

Case diameter Ø 43.0 mm

10 ATM

\$ 199



18688/1



18688/2



18688/4



18688/6

18682

MAN

CHRONO

Quartz Movement

Case diameter Ø 43.0 mm

10 ATM

\$ 219



18690/1



18690/2



18690/3



18690/4



18690/5



18690/6

18690

MAN

CHRONO

Quartz Movement

Case diameter Ø 42.0 mm

10 ATM

\$ 199



18691/2



18691/5



18691/6

18691

MAN

CHRONO

Quartz Movement

Case diameter Ø 42.0 mm

10 ATM

\$ 179



18700/1



18700/2



18700/3

18700

MAN

CHRONO

Quartz Movement

Case diameter Ø 41.5 mm

5 ATM

\$ 229

CHRONO COLLECTION



18881/1



18881/3



18881/2

18881

MAN

Quartz Movement

Case diameter Ø 44.0 mm

CHRONO

10 ATM

\$ 279

COLOR COLLECTION



18621/1



18621/2

18621

MAN

Quartz Movement

Case diameter Ø 42.0 mm

5 ATM

\$ 169



18672/A



18672/B



18672/C

18672

MAN

Quartz Movement

Case diameter Ø 43.5 mm

10 ATM

\$ 219



FREEDOM COLLECTION

Lotus offers a line of iconic sports chronographs to combine with next season's most fashionable garments. With the latest Freedom Collection, the brand revisits the aesthetics of 1970s watches with surprising new models, versatile and transversal, with a case and wrist band defined in different shades of steel, ranging from the metal's neutral tones in the natural version

Lotus propose une ligne de chronographes sportifs iconiques à combiner avec les vêtements les plus à la mode de la saison prochaine. Avec la dernière collection Freedom, la marque revisite l'esthétique des montres des années 1970 avec de nouveaux modèles surprenants, polyvalents et transversaux, avec un boîtier et un bracelet définis dans différentes nuances d'acier, allant des tons neutres du métal à la version naturelle.



18836/1



18836/2



18836/3

18836

Quartz Movement

Case diameter Ø 40.0 mm

10 ATM

\$ 249



18835

Quartz Movement

Case diameter Ø 40.0 mm

10 ATM

\$ 229



18835/1



18835/2



18835/3



18837/1



18837/2



18837/3

18837

Quartz Movement

Case diameter Ø 40.0 mm

10 ATM

\$ 279



18854/1



18854/2



18854/3



18854/4



18854/8

18854

Quartz Movement

Case diameter Ø 41.5 mm

10 ATM

\$ 229

FREEDOM COLLECTION



18854/5



18854/6



18854/7



18854/9





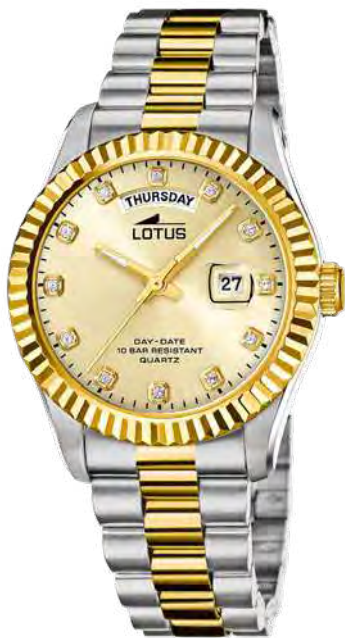
18855/1



18855/2



18855/3



18855/4



18855/5



18855/6

18855

Quartz Movement

Case diameter Ø 41.5 mm

10 ATM

\$ 249



18857/1



18857/4



18857/5



18857/6



18857/7

18857

Quartz Movement

Case diameter Ø 41.5 mm

10 ATM

\$ 279





18856/3

Quartz Movement

Case diameter Ø 41.5 mm

10 ATM

\$ 249





18885/1



18885/2



18885/3



18885/4

18885

Quartz Movement

Case diameter Ø 31.5 mm

10 ATM

\$ 239



18886/1



18886/2



18886/3



18886/4

18886

Quartz Movement

Case diameter Ø 31.5 mm

10 ATM

\$ 259





18838/1



18838/2



18838/3

18838

Quartz Movement

Case diameter Ø 31.5 mm

10 ATM

\$ 229



18839/1



18839/2



18839/3

18839

Quartz Movement

Case diameter Ø 31.5 mm

10 ATM

\$ 249





18840/1



18840/2



18840/3

18840

Quartz Movement

Case diameter Ø 31.5 mm

10 ATM

\$ 279



15196/1
\$ 189



15197/1
\$ 219

15196 - 15197

Quartz Movement

Case diameter Ø 37.5 mm

10 ATM



15822/1
\$ 189



15823/1
\$ 219

15822 - 1823

Quartz Movement

Case diameter Ø 30.0 mm

10 ATM



18756/1



18756/2



18756/3

18756

Quartz Movement
Case diameter Ø 44.5 mm
10 ATM
\$ 269



18757/1



18757/2

18757

Quartz Movement
Case diameter Ø 44.5 mm
10 ATM
\$ 289

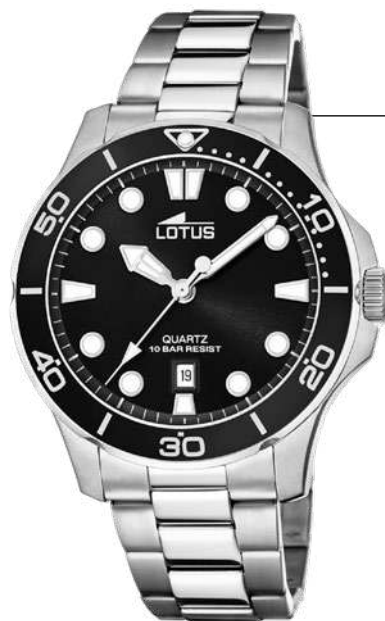
FREEDOM COLLECTION



18759/1



18759/2



18759/3

18759

Quartz Movement

Case diameter Ø 44.5 mm

10 ATM

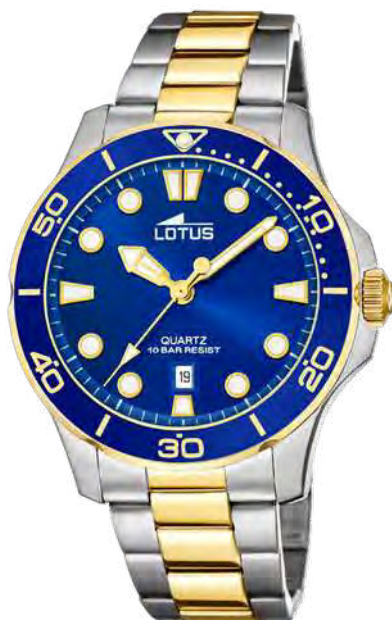
\$ 229



18758/1



18758/3



18760/1



18760/2

18760

Quartz Movement

Case diameter Ø 44.5 mm

10 ATM

18758 - \$ 299

18760 - \$ 249



18912/1



18912/2



18912/3



18912/4



18912/5



18912/6

18912

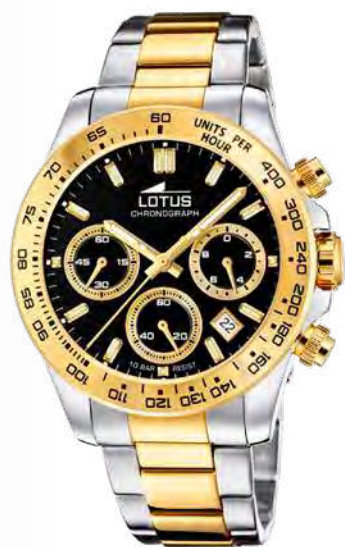
Quartz Movement

Case diameter Ø 43.5 mm

10 ATM

\$ 349

FREEDOM COLLECTION



18913/6

18913

Quartz Movement

Case diameter Ø 43.5 mm

10 ATM

\$ 399



EXCELLENT COLLECTION

The new Lotus Excellent collection, which reveals the brand's boldest side with a series of "time-only" proposals with a vintage flavour and a collection of chronographs with refined details.

La nouvelle collection Lotus Excellent, qui révèle le côté le plus audacieux de la marque avec une série de propositions "time-only" au goût vintage et une collection de chronographes aux détails raffinés.



18841/1



18841/2



18841/3



18841/4

18841

Quartz Movement

Case diameter Ø 40.5 mm

5 ATM

\$ 349



18847 - 18848 - 19949 - 18868

Quartz Movement

5ATM

Case diameter Ø 41.8 mm

18847 - \$ 359

18848 - \$ 389

18849 - \$ 389

18868 - \$ 389



18847/1



18847/2



18847/3



18848/1



18849/1



18868/1



18869/1

18869

Quartz Movement

5ATM

Case diameter Ø 36.5 mm

\$ 359





18872/1



18872/2



18872/3

18872

Quartz Movement

Case diameter Ø 38.0 mm

CHRONOGRAPH

\$ 379

5ATM



18873

Quartz Movement

CHRONOGRAPH

Case diameter Ø 38.0 mm

5 ATM

\$ 399

18873/1



18874

Quartz Movement

CHRONOGRAPH

Case diameter Ø 38.0 mm

5 ATM

\$ 399

18874/1



18875/1



18875/2

18875

Quartz Movement

CHRONOGRAPH

Case diameter Ø 38.0 mm

5 ATM

\$ 329



18875/3



BLISS

COLLECTION

Watches with dials full of sparkle and fantasy make up the Lotus Bliss collection. Pieces to wear on special occasions that will make you the star of the party.

Des montres aux cadrans pleins d'éclat et de fantaisie composent la collection Lotus Bliss. Des pièces à porter lors d'occasions spéciales qui feront de vous la star de la soirée.



18907/1



18907/2

18907

Quartz Movement

Case diameter Ø 39.0 mm

5 ATM

\$ 289



18908 - 18909

Quartz Movement
Case diameter Ø 39.0 mm
5 ATM
\$ 289



18908/1



18909/1





18799/1



18799/2



18799/3

18799

Quartz Movement

Case diameter Ø 33.0 mm

5 ATM

\$ 189



18824/1



18824/2



18825/1

18824 - 18825

Quartz Movement

Case diameter Ø 33.0 mm

5 ATM

\$ 179



18826/1



18826/2



18826/3

18826

Quartz Movement

Case diameter Ø 31.5 mm

5 ATM

\$ 179



18827/1



18828/1



18828/2

18827 - 18828

Quartz Movement

Case diameter Ø 31.5 mm

5 ATM

\$ 199

BLISS COLLECTION







18898/2



18898/3



18898/6

18898

Quartz Movement

Case diameter Ø 38.0 mm

5 ATM

\$ 239



18902/1



18902/2



18902/3

18902

Quartz Movement

Case diameter Ø 38.0 mm

5 ATM

\$ 249



18568/B



18568/C



18568/D

18568

Quartz Movement

Case diameter Ø 32.5 mm

5 ATM

\$ 159



18569/C

18569

Quartz Movement

Case diameter Ø 32.5 mm

5 ATM

\$ 169

BLISS COLLECTION



18616/1

18616

Quartz Movement

Case diameter Ø 29.0 mm

5 ATM

\$ 199



18647/1

18647

Quartz Movement

Case diameter Ø 32.0 mm

5 ATM

\$ 199





18708/1



18708/2

18708

Quartz Movement

Case diameter Ø 29.0 mm

5 ATM

\$ 199



18709/1



18709/2

18709

Quartz Movement

Case diameter Ø 29.0 mm

5 ATM

\$ 199







18749/1



18749/2

18709

Quartz Movement
Case diameter Ø 32.0 mm
5 ATM
\$ 199



18793/1



18793/2



18793/3



18793/4



18793/5

18793

Quartz Movement
Case diameter Ø 29.0 mm
5 ATM
\$ 169



18883/1



18883/2



18883/3



18883/4



18883/5



18883/6



18883/7



18883/8

18883

Quartz Movement

Case diameter Ø 32.5 mm

5 ATM

\$ 169

BLISS COLLECTION



18884/1



18884/2



18884/3



18884/4



18884/5



18884/6



18884/7



18884/8

18884

Quartz Movement

Case diameter Ø 32.5 mm

5 ATM

\$ 159



18796/1



18796/2



18796/3



18796/4



18797/1

18796 - 18797

Quartz Movement

5ATM

Case diameter Ø 34.0 mm

18796 - \$ 179

18797 - \$ 199



18888/1



18888/2



18888/4



18888/6

18888

Quartz Movement

Case diameter Ø 33.26 mm

5 ATM

\$ 249



18894/1



18894/2

18894

Quartz Movement

Case diameter Ø 32.5 mm

5 ATM

\$ 219



18894/3



18894/4

18895

Quartz Movement

Case diameter Ø 32.5 mm

5 ATM

\$ 249



18895/1

BLISS COLLECTION



18910/1



18910/2



18910/3

18910

Quartz Movement

Case diameter Ø 32.5 mm

5 ATM

\$ 229



18911/1



18911/2

18911

Quartz Movement

Case diameter Ø 32.5 mm

5 ATM

\$ 249



50002/A

Alloy

SMART WATCHES

Case diameter Ø 39.65 mm

\$ 199

SMARTWATCH COLLECTION

SMARTWATCH COLLECTION

In an increasingly connected world, it is possible to have everything at your fingertips, Lotus makes its way into the SMARTWATCH division with Lotus SmarTime.

50032/1

Alloy

SMART WATCHES

Case diameter Ø 45.95 mm

\$ 239

FREE STRAP INCLUDED

Dans un monde de plus en plus connecté, il est possible d'avoir tout à portée de main. Lotus fait son entrée dans la division SMARTWATCH avec Lotus SmarTime.





50000/A



50001/A



50003/A

50000 - 50001 - 50003

Alloy

SMART WATCHES

Case diameter Ø 39.65 mm

\$ 199



50014/A



50015/A



50016/A

50014 - 50015 - 50016

Alloy

SMART WATCHES

Case diameter Ø 42.6 mm

\$ 219







50017/1



50018/1



50023/1

50017 - 50018 - 50023

Alloy

SMART WATCHES

50017 - Case diameter Ø 45.0 mm

50018 - Case diameter Ø 45.0 mm

50023 - Case diameter Ø 46.93 mm

50017 - \$ 249

50018 - \$ 249

50023 - \$ 229



50010/A

50010

Alloy

SMART WATCHES

Case diameter Ø 47.95 mm

\$ 239



50025/1

50025

Alloy

SMART WATCHES

Case diameter Ø 45.0 mm

\$ 249



50033/1



50034/1

50033 - 50034

Alloy

SMART WATCHES

Case diameter Ø 45.95 mm

\$ 239



50044/1



50045/1



50049/1

50044 - 50045 - 50049

Alloy

SMART WATCHES

Case diameter Ø 44.2 mm

\$ 249



50046/1

50046

Alloy

SMART WATCHES

Case diameter Ø 44.2 mm

\$ 249



50035/1



50036/1

50035 - 50036

Alloy

SMART WATCHES

Case diameter Ø 38.1 mm

\$ 199



50047/1



50048/1

50047 - 50048

Alloy

SMART WATCHES

Case diameter Ø 44.35 mm

\$ 299



50040/1



50041/1



50042/1

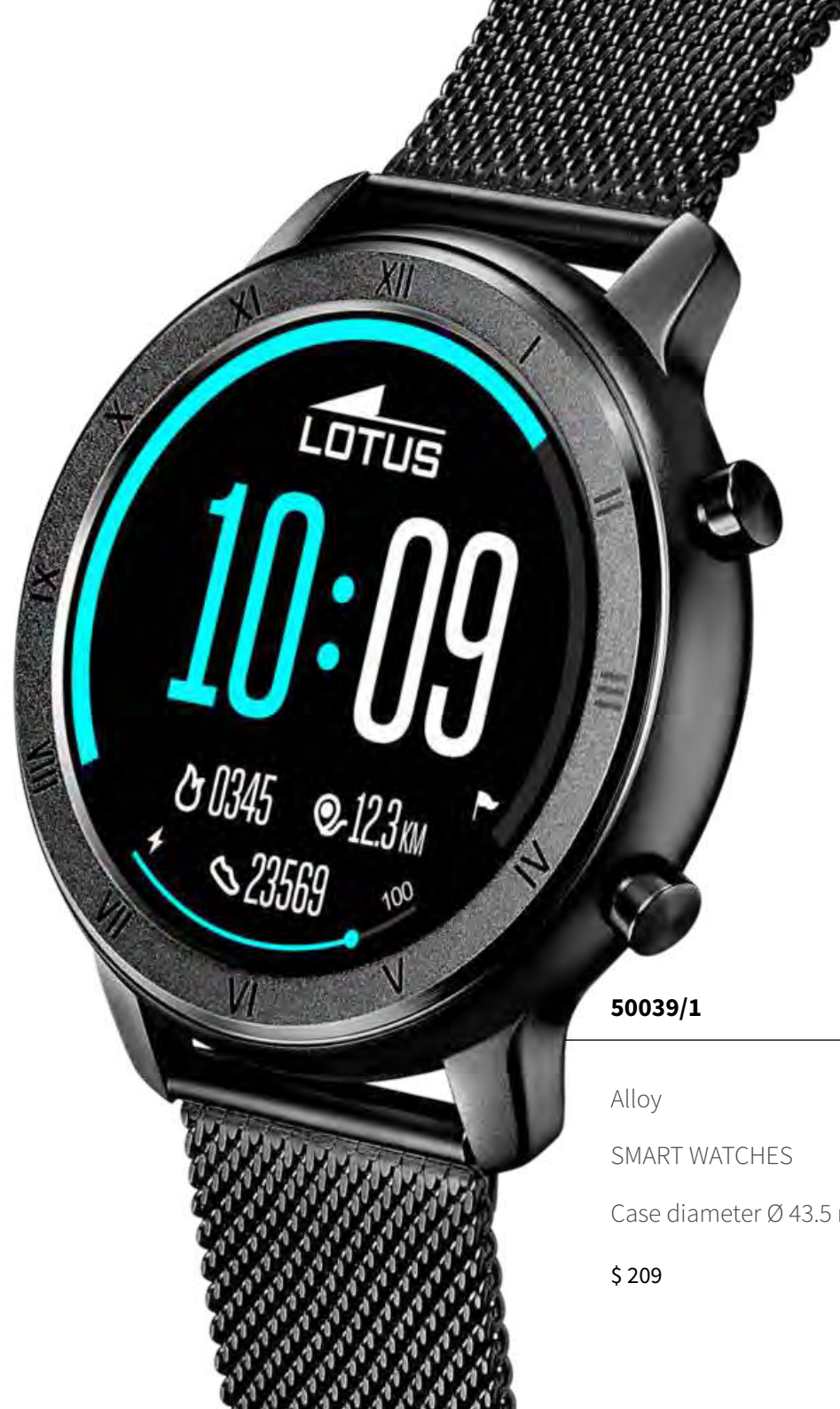
50040 - 50041 - 50042

Alloy

SMART WATCHES

Case diameter Ø 42.5 mm

\$ 239



50039/1

Alloy

SMART WATCHES

Case diameter Ø 43.5 mm

\$ 209



50024/3





50024/4

50024

Alloy

SMART WATCHES

50024 - Case diameter Ø 50.8 mm

\$ 249



NOTIFICATIONS



DRINK WATER
REMINDER



STEP
COUNTER



SLEEP
MONITORING



MUSIC
CONTROL



SPORTS MODE*



HEART RATE



BLOOD
PRESSURE



ALARM CLOCK



SEDENTARY
REMINDER



CHRONOMETER



FIND
MY PHONE



CAMERA REMOTE
CONTROL



CUSTOM
WATCH FACE



MOVEMENT
ACTIVATOR



LADY
ASSISTANT



MEN IN BLACK COLLECTION

The Men in Black Collection is designed for stylish men who know what they want. High quality, durable 316 stainless steel jewellery that stands out for its character and personality.

La collection Men in Black est conçue pour les hommes élégants qui savent ce qu'ils veulent. Des bijoux en acier inoxydable 316 de haute qualité et durables qui se distinguent par leur caractère et leur personnalité.



LS2191-1/1
\$ 95



LS2191-1/2
\$ 120



LS2191-2/1
\$ 70



LS2191-2/2
\$ 85





LS1682-1/1
\$ 60



LS1682-1/2
\$ 60



LS1682-1/3
\$ 60



LS1650-2/1
\$ 95

LS1507-2/1
\$ 95



LS1590-2/1
\$ 95



LS1575-2/1
\$ 85



LS1800-2/1
\$ 95



LS1798-2/1
\$ 85



LS1799-2/1
\$ 70



LS1966-2/2
\$ 70



LS1803-2/1
\$ 95



LS2209-2/1
\$ 60



LS2256-1/1
\$ 95



LS2256-1/2
\$ 85



LS1984-1/1
\$ 60



LS1984-1/2
\$ 60



LS1984-1/3
\$ 60



LS1969-2/1
\$ 70



LS2259-2/1
\$ 110



LS2259-2/2
\$ 120



LS2105-1/2
\$ 60



LS1983-1/1
\$ 60



LS1316-1/2
\$ 85



LS1316-2/2
\$ 110

MEN IN BLACK



LS1521-2/2
\$ 95

LS1522-2/2
\$ 95



LS1933-1/1
\$ 95



LS1938-1/1
\$ 70



LS2215-1/1
\$ 85



LS1934-2/1
\$ 70



LS1935-2/1
\$ 60



LS2215-2/1
\$ 70





LS2268-2/1
\$ 85



LS1878-2/3
\$ 70



LS1876-2/2
\$ 70



LS1177-2/4
\$ 95



LS2058-2/1
\$ 70



LS1554-2/1
\$ 85



LS1989-2/1
\$ 70



LS2258-2/1
\$ 85





LS2210-1/1
\$ 60



LS2210-1/2
\$ 70



LS2222-1/1
\$ 45



LS2210-2/1
\$ 45



LS2210-2/2
\$ 60



LS2222-2/1
\$ 40



LS2223-1/1
\$ 45



LS2233-1/1
\$ 70



LS2233-1/2
\$ 95



LS2223-2/1
\$ 40



LS2233-2/1
\$ 70



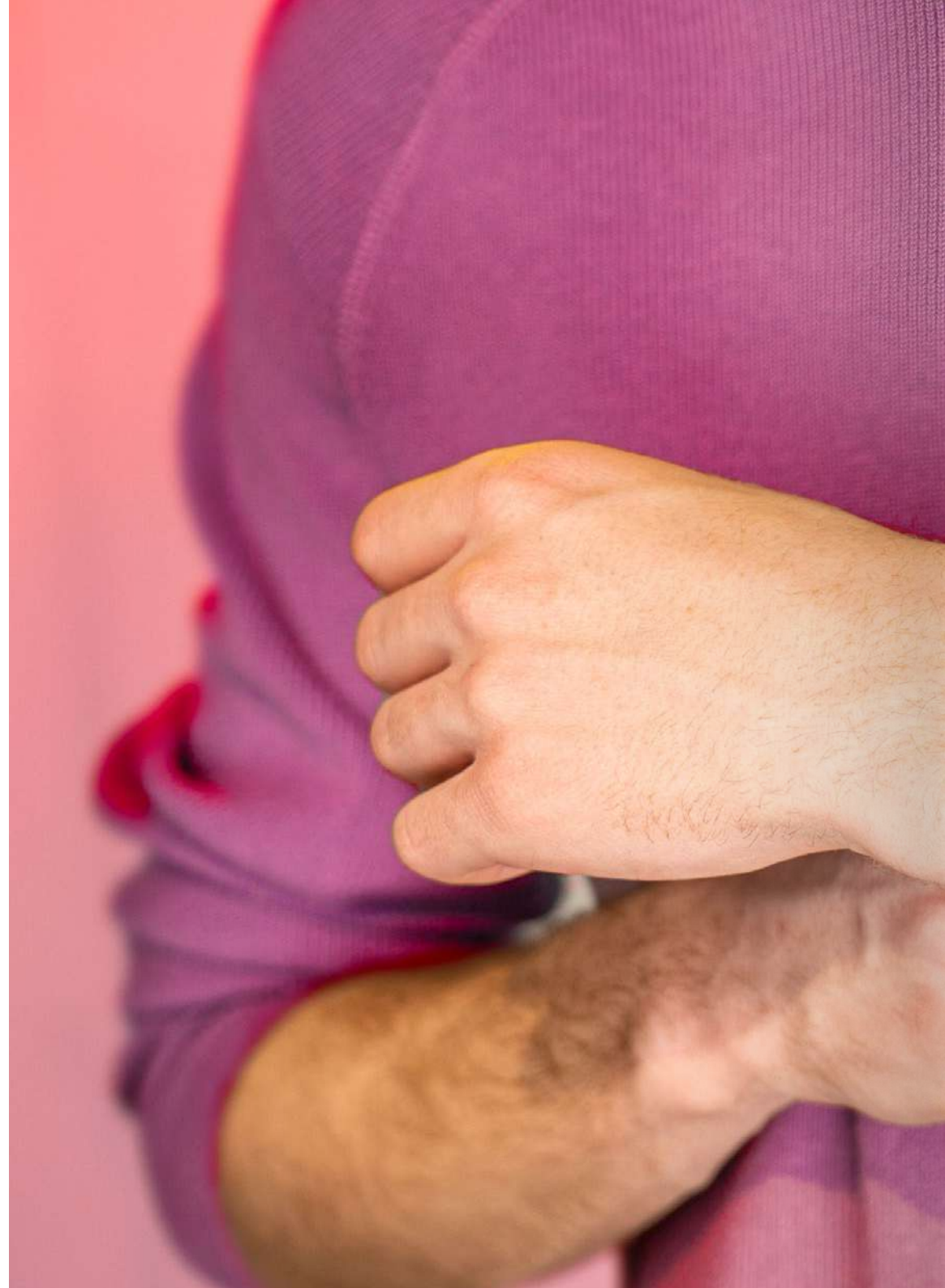
LS2233-2/2
\$ 85

URBAN MAN

COLLECTION

A collection with a strong urban and daring character. Trendy designs that combine steel with other materials to make each piece of jewellery a unique piece that stands out from the crowd.

Une collection au caractère urbain et audacieux. Des créations tendance qui associent l'acier à d'autres matériaux pour faire de chaque bijou une pièce unique qui se démarque.





LS2211-1/1
\$ 60



LS2055-2/4
\$ 70



LS2139-1/1
\$ 70



LS2139-1/5
\$ 70



LS2103-2/2
\$ 60



LS2094-2/1
\$ 85



LS2208-2/1
\$ 70



LS2208-2/3
\$ 85



LS2144-2/2
\$ 85



LS2144-2/3
\$ 85



LS2144-2/4
\$ 85

COLLECTION URBAN MAN





LS2140-1/1
\$ 95



LS2140-1/2
\$ 110



LS2140-2/1
\$ 60



LS2140-2/2
\$ 70

COLLECTION URBAN MAN



LS2093-2/1
\$ 60



LS2093-2/2
\$ 60



LS1838-2/1
\$ 85



LS1827-2/1
\$ 70



LS1838-2/2
\$ 85



LS1827-2/2
\$ 85



LS1827-2/3
\$ 85



COLLECTION URBAN MAN



LS2190-2/1
\$ 45



LS2190-2/2
\$ 45



LS2190-2/3
\$ 45



LS2190-2/4
\$ 45



LS1832-2/1
\$ 70



LS1832-2/4
\$ 70



LS1814-2/1
\$ 70



LS1814-2/2
\$ 70



LS1829-2/1
\$ 70



LS1829-2/8
\$ 70



LS1829-2/3
\$ 70



LS1829-2/9
\$ 70



LS1829-2/4
\$ 70



LS1829-2/A
\$ 70



LS1829-2/5
\$ 70



LLS1829-2/C
\$ 70

URBAN MAN



LS2145-2/3
\$ 70



LS2101-2/1
\$ 70



LS2102-2/1
\$ 70

MEN BASIC COLLECTION

The Men basic collection brings together the Lotus Style “must-haves” for men. 100% Lotus character jewellery. Style and innovation in every piece.

La collection Men basic rassemble les incontournables de Lotus Style pour les hommes. 100% de bijoux de caractère Lotus. Style et innovation dans chaque pièce.





LS2095-2/2
\$ 60



LS1119-2/1
\$ 70



LS2011-2/1
\$ 70



LS2011-2/2
\$ 70



LS2104-2/1
\$ 70



LS2104-2/2
\$ 70



LS2206-2/1
\$ 85



LS2056-2/1
\$ 85



MEN BASIC COLLECTION



LS1965-2/1
\$ 70



LS1965-2/2
\$ 70



LS1965-2/3
\$ 70



LS2141-2/1
\$ 45



LS2141-2/3
\$ 45



LS2141-2/4
\$ 45



MEN'S EARRINGS

COLLECTION

Lotus Style presents its collection of earrings designed especially for men. A masculine and daring collection, with innovative and avant-garde designs designed for non-conformist men who take care of their style down to the last detail. Jewellery made of 100% hypoallergenic 316L stainless steel.

Lotus Style présente sa collection de boucles d'oreilles spécialement conçues pour les hommes. Une collection masculine et audacieuse, au design innovant et avant-gardiste, conçue pour les hommes anticonformistes qui soignent leur style jusque dans les moindres détails. Bijoux en acier inoxydable 316L 100% hypoallergénique.



LS2151-4/1
\$ 45



LS2152-4/1
\$ 45



LS2154-4/2
\$ 45



LS2159-4/1
\$ 45



LS2160-4/1
\$ 45



LS2160-4/3
\$ 45



LS2160-4/4
\$ 45



LS2160-4/5
\$ 45



LS2174-4/1
\$ 35



LS2173-4/1
\$ 40



LS2228-4/1
\$ 40



LS2164-4/1
\$ 60



LS2166-4/1
\$ 45



LS2166-4/2
\$ 60



LS2167-4/1
\$ 45



LS2167-4/2
\$ 60

BLISS

COLLECTION

Sparkle and colour are the main protagonists of our Lotus Bliss collection, jewellery with personality for women with a bold and fun style. Are you one of them?

L'éclat et la couleur sont les principaux protagonistes de notre collection Lotus Bliss, des bijoux qui ont de la personnalité pour les femmes au style audacieux et amusant. Êtes-vous l'une d'entre elles ?





LS2176-1/1
\$ 65



LS1981-1/1
\$ 60



LS2176-4/1
\$60



LS1981-4/1
\$ 60



LS2176-2/1
\$ 65



LS1981-2/1
\$ 60



LS2113-2/1
\$ 85



LS2021-2/2
\$ 85



LS2183-2/1
\$ 45





LS1845-2/1
\$ 95



LS1845-2/2
\$ 110



LS2111-2/1
\$ 85



LS2111-2/2
\$ 95



LS2111-2/3
\$ 95



LS2111-2/4
\$ 95



LS2088-2/1
\$ 85



LS1843-2/4
\$ 85



LS1846-2/1
\$ 85



LS2088-2/2
\$ 85



LS1843-2/5
\$ 85



LS1846-2/2
\$ 95



LS2088-2/3
\$ 85



LS1843-2/6
\$ 85



LS1846-2/3
\$ 95

BLISS COLLECTION





LS1913-1/1
\$ 70



LS1913-1/3
\$ 70



LS1913-2/1
\$ 70



LS1913-2/3
\$ 70

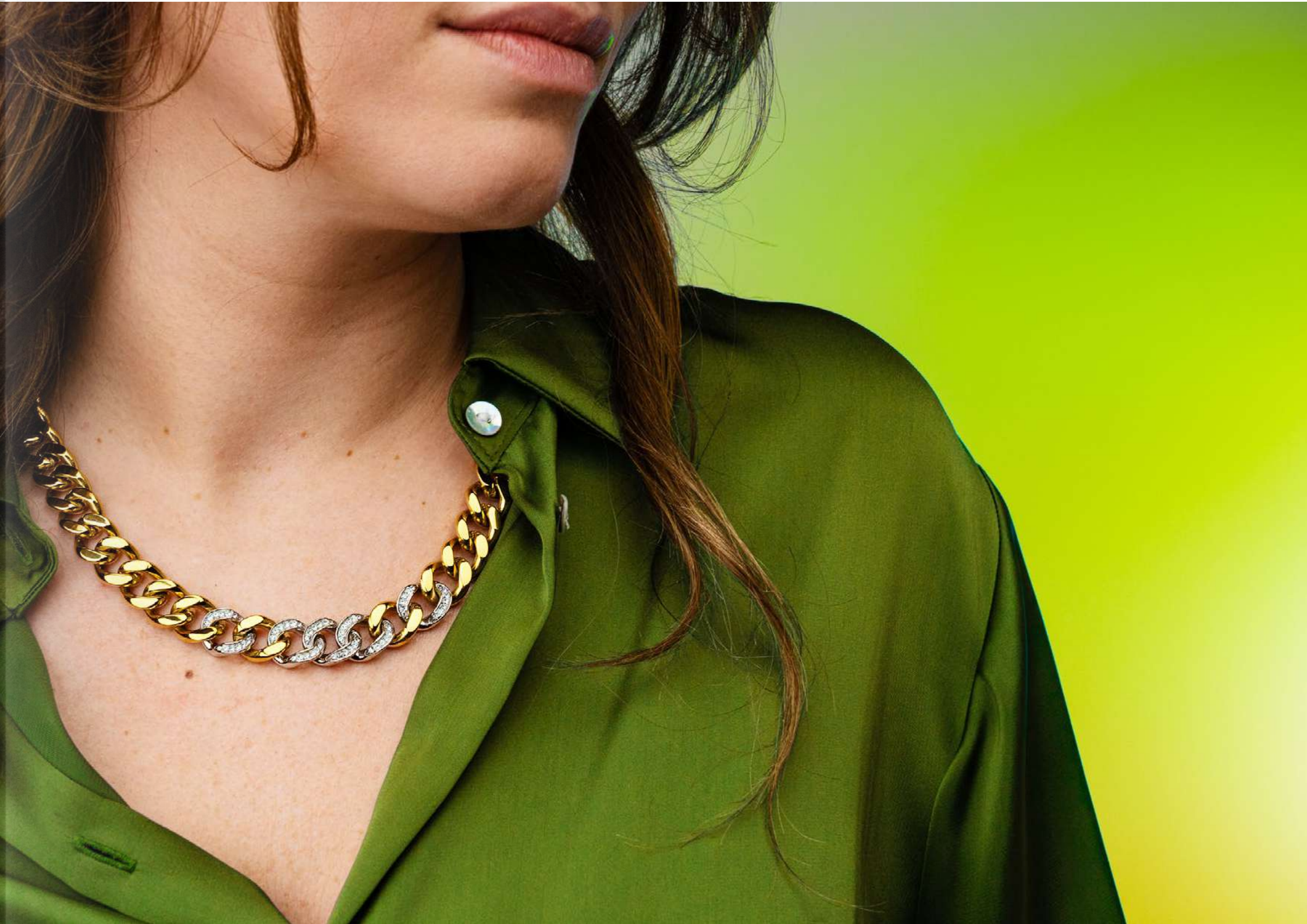


URBAN WOMAN COLLECTION

Determined, confident and stylish: this is the woman who wears the Urban Woman collection, jewellery that will make you shine.

Déterminée, confiante et élégante : telle est la femme qui porte la collection Urban Woman, des bijoux qui vous feront briller.







URBAN WOMAN COLLECTION



LS2090-1/2
\$ 85



LS2112-1/2
\$ 60



LS2177-4/1
\$ 60



LS1780-1/1
\$ 70



LS1780-1/2
\$ 85



LS1780-4/1
\$ 60



LS1780-4/2
\$ 70



LS1780-2/1
\$ 70



LS1780-2/2
\$ 85



LS1672-1/1
\$ 95



LS1672-4/1
\$ 70



LS1672-2/1
\$ 95



LS2230-1/1
\$ 90



LS2230-4/1
\$ 45



LS2230-2/1
\$ 45

URBAN WOMAN COLLECTION



LS2180-1/1
\$ 60



LS2180-4/1
\$ 60



LS2124-2/1
\$ 45



LS2124-2/2
\$ 60



LS1961-2/3
\$ 60



LS2127-2/1
\$ 60



LS2127-2/2
\$ 70



LS2254-2/1
\$ 70



TREE OF LIFE

COLLECTION

What jewellery can make you sparkle more than our Rainbow collection? The tree of life is back to become your favourite accessory, whether it's a bracelet, earrings or pendant, and you can wear it in yellow, silver or rose gold.

Quel bijou peut vous faire briller plus que notre collection Rainbow ? L'arbre de vie est de retour pour devenir votre accessoire préféré, qu'il s'agisse d'un bracelet, de boucles d'oreilles ou d'un pendentif, et vous pouvez le porter en jaune, en argent ou en or rose.





LS2225-1/1
\$ 45



LS2225-1/2
\$ 60



LS2225-2/3
\$ 45



LS2225-2/1
\$ 45



LS2225-4/1
\$ 45



LS2225-4/2
\$ 60



LS2225-2/4
\$ 60



LS2225-2/2
\$ 60

TREE OF LIFE COLLECTION



LS2181-1/1
\$ 60



LS2181-2/4
\$ 45



LS2181-4/1
\$ 65



LS2181-2/6
\$ 60



LS2181-2/1
\$ 60





LS1869-1/1
\$ 70



LS2194-1/1
\$ 60



LS1898-1/1
\$ 60



LS1869-4/1
\$ 60



LS2194-2/1
\$ 60



LS1898-2/1
\$ 60



LS1869-2/1
\$ 70

WOMAN'S HEART COLLECTION

Give the gift of a special piece of jewellery with Woman's Heart, the most romantic jewellery collection by Lotus where you will find the heart in all its versions.

Offrez un bijou spécial avec Woman's Heart, la collection de bijoux la plus romantique de Lotus, où vous trouverez le cœur dans toutes ses versions.



LS1912-1/2
\$ 70



LS1943-1/2
\$ 70



LS1943-4/2
\$ 70



LS1912-2/2
\$ 70



LS1943-2/2
\$ 70





LS2117-1/1
\$ 85



LS1912-1/1
\$ 70



LS2026-1/1
\$ 60



LS2026-2/1
\$ 70



LS2117-2/1
\$ 85



LS1912-2/1
\$ 70



LS2188-2/1
\$ 65

WOMAN'S HEART COLLECTION



LS1867-1/1
\$ 70



LS2182-2/1
\$ 45



LS2182-2/2
\$ 60

MILLENNIAL COLLECTION

With a minimalist style and a romantic touch, these are the favourite jewels of the millennials that show us that the classic always comes back: Hearts, infinity, shamrocks, or the hand of Fatima are the main charms of the Millennial collection.

Avec un style minimaliste et une touche romantique, ce sont les bijoux préférés des millennials qui nous montrent que le classique revient toujours : Les cœurs, l'infini, les trèfles ou la main de Fatima sont les principaux charmes de la collection Millennial.







LS2014-2/1
\$ 45



LS2014-2/3
\$ 45



LS2014-2/5
\$ 45



LS2119-2/1
\$ 60



LS2015-2/1
\$ 45



LS2015-2/5
\$ 45



LS2119-2/3
\$ 60



LS2015-2/3
\$ 45



LS2015-2/6
\$ 45

MILLENNIAL COLLECTION



LS2169-2/1
\$ 45



LS2169-2/3
\$ 45



LS2169-2/4
\$ 45



TROPICAL VIBES

COLLECTION

The fusion of steel with other materials is at the heart of the Lotus Style collection of jewelry with an urban and daring style.

Cette collection de bijoux associe l'acier à d'autres matériaux, créant un style urbain et audacieux. Le bracelet est parfait pour être porté en toute occasion et ajouter une touche d'élégance à votre look. De plus, sa durabilité garantit que vous pourrez en profiter pendant longtemps. Ne manquez pas l'occasion d'avoir ce bracelet unique et sophistiqué dans votre collection de bijoux.



LS2330-1/1
\$ 85



LS2330-4/1
\$ 45



LS2330-2/1
\$ 60







LS2330-1/2
\$ 85



LS2330-1/3
\$ 85



LS2330-4/2
\$ 45



LS2330-4/3
\$ 45



LS2330-2/2
\$ 60



LS2330-2/3
\$ 60



LS2330-1/4
\$ 95



LS2330-4/4
\$ 60



LS2330-2/4
\$ 70





LS2330-1/5
\$ 95



LS2330-1/6
\$ 95



LS2330-4/5
\$ 60



LS2330-4/6
\$ 60



LS2330-2/5
\$ 70



LS2330-2/6
\$ 70





LS2331-4/1
\$ 60



LS2331-4/2
\$ 60



LS2331-4/3
\$ 60



LS2331-4/4
\$ 60



LS2331-4/5
\$ 60



LS2331-4/6
\$ 60



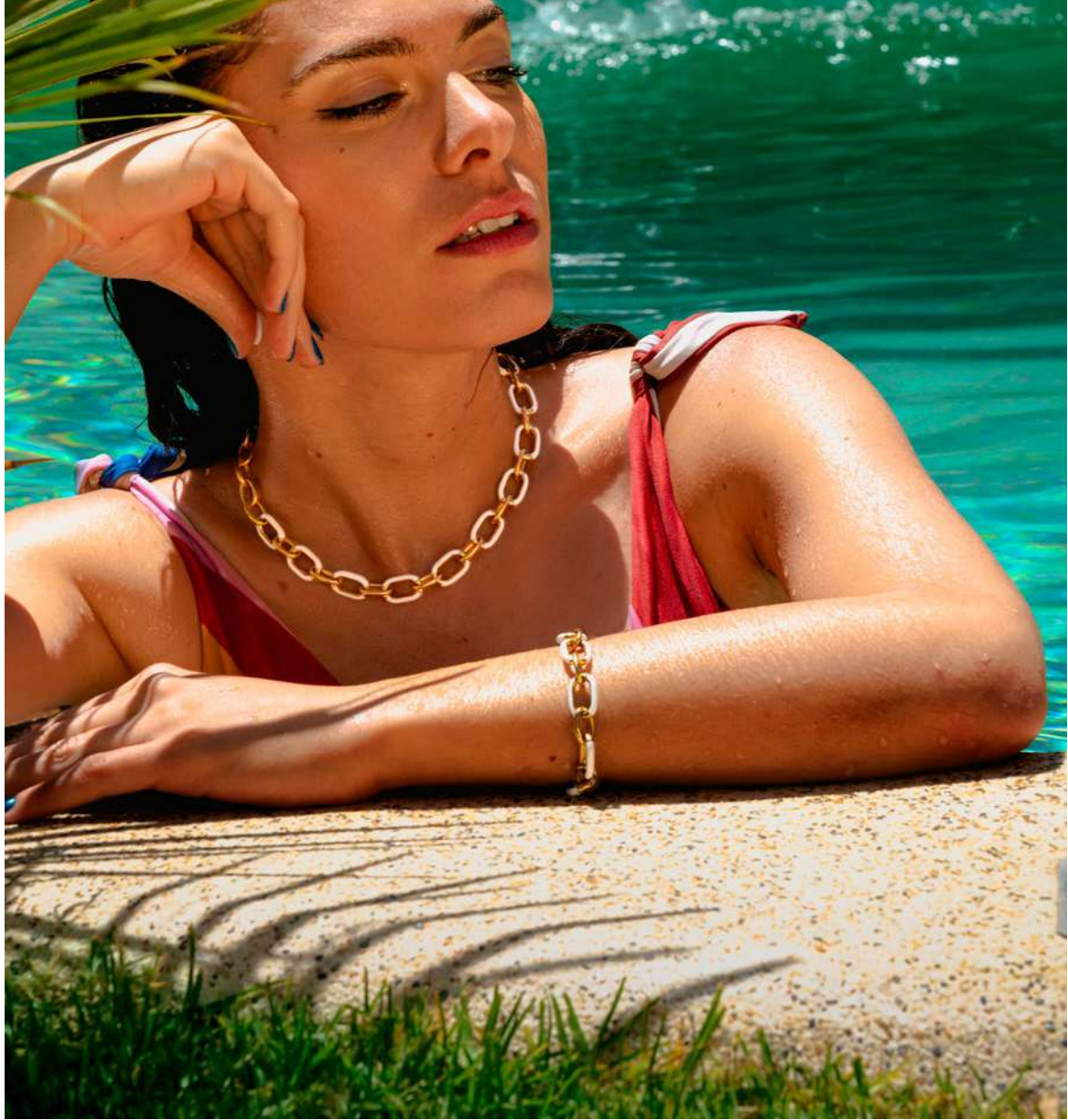
LS2331-4/7
\$ 60

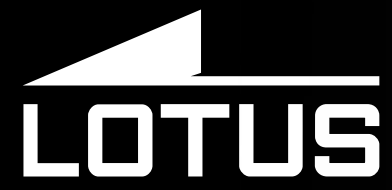


LS2331-4/8
\$ 60



LS2331-4/9
\$ 60





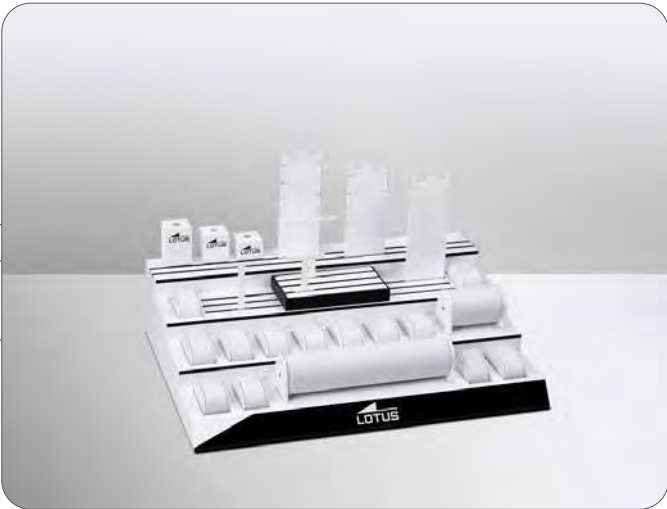
SALES KIT 2023

LEXPO21 (Modular display)

LEXPO21BA/1

Big base

*W 52 cm - H 12,5 cm -
D 57 cm



LEXPO21FRO/1

Big backcard

*W 52 cm - H 50 cm -
D 2 cm



LEXPO21BA/2

Small base

*W 30 cm - H 12,5 cm -
D 57 cm



LEXPO21FRO/2

Small backcard

*W 30 cm - H 50 cm -
D 2 cm





LEXPO21BA/3

Big base equipped with Jewelry Display set

*W 30 cm - H 12,5 cm - D 37 cm





M010243

Watch holders

* W 4 cm - H 6 cm - D 4 cm + C-Clip

* W 4 cm - H 4,5 cm - D 4 cm + C-Clip

* W 4 cm - H 3 cm - D 4 cm + C-Clip



M010063

Individual watch holder with plastic base

Set of 25 units

WATCH BOXES



L40

Box

* W 14 cm - H 6,5 cm - D 8,7 cm



L51

Box set ECO

* W 14,5 cm - H 6 cm - D 10,7 cm



Display



LSEXPO/17

Display

Closed * W 44,5 cm - H 39,5 cm - D 37,5 cm

Opened * W 69,5 cm - H 39,5 cm - D 37,5 cm



M110139

Extra Kit jewellery



M010555

Display for bracelets

* W 25 cm - H 11,5 cm - D 8,5 cm



M110140

Display

* W 20 cm - H 26 cm - D 10,5 cm

Watch box



Y20

Man Collection box (ring)

* W 6 cm - H 4 cm - D 6 cm



Y22

Woman Collection box

* W 10,5 cm - H 4,7 cm - D 10,9 cm



Y25

Eco Box

* W 10,5 cm - H 4,7 cm - D 10,5 cm

